

**MATIBUS**

Digital call system MATIBUS suits both small and big installations.

Compared to other call system, MATIBUS is characterised by a simple installation and easy programming. At the same time MATIBUS can satisfy most needs of large systems.

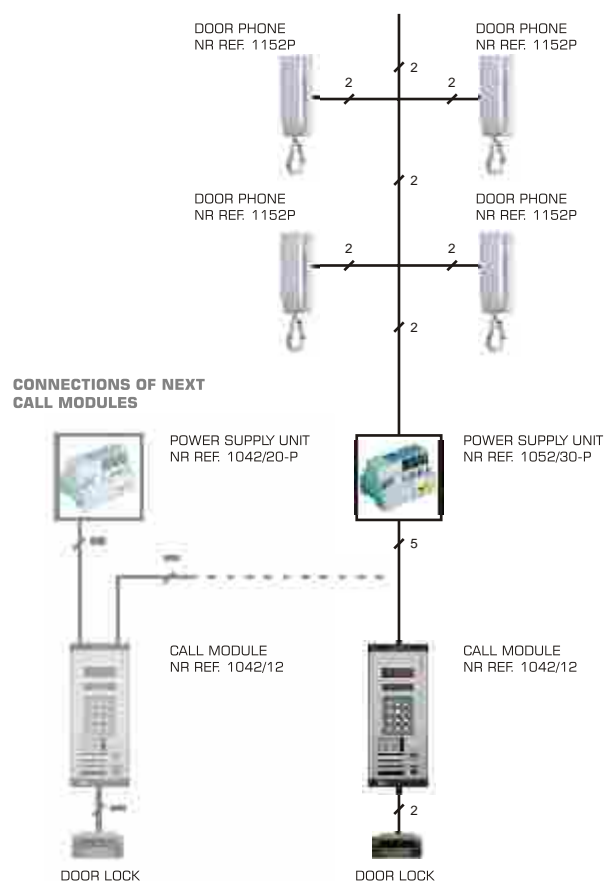
**BASIC FEATURES OF MATIBUS SYSTEM**

- installation with 2 wires in a riser, independently from the number of users
- conversation privacy
- up to 510 users
- capability to manage main call stations and secondary call stations.
- possibility of using up to 8 main call stations
- possibility of using up to 256 secondary call stations
- generic door opener codes
- personal door opener codes
- possibility of using LED display and electronic repertory
- door phones with single decoder programmed by jumpers
- additional button for one user

# BASIC CONFIGURATIONS OF THE SYSTEM

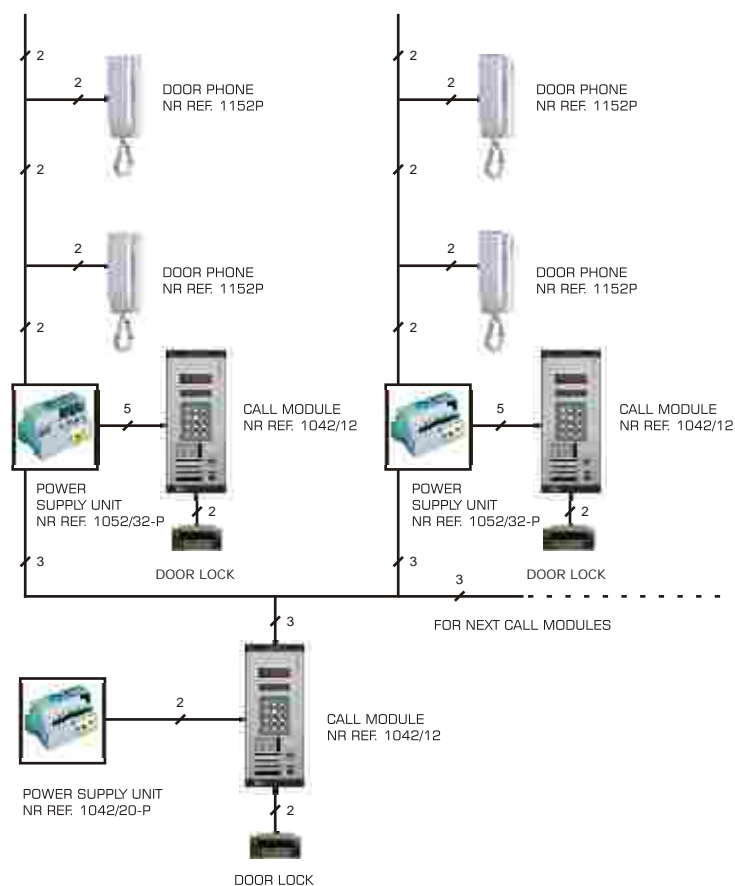
## MATIBUS

### INSTALLATION WITH MAIN CALL STATION



MATIBUS system can be extended up to maximum 8 main call station. During a conversation between one station and a user, all remaining stations are occurred. One of call stations must be powered by power supply unit ref. 1052/30P, the rest call stations by power supply units ref. 1042/20P. In this configuration you can enlarge the number of users by using two power supply units ref. 1052 / 30P

### INSTALLATION WITH MAIN CALL STATION AND ADDITIONAL CALL STATION



System MATIBUS enables creation of multi-entrance structure, with distribution on:

- \* front entrances - 8 maximum
- \* additional entrances - 256 maximum

Due to such solution system can be installed in closed residential housing estates - "condominiums".

#### LIST OF BASIC FIX-UP

<b>Nr ref. 1152P</b>	Door phone
<b>Nr ref. 1052/30P</b>	Power supply unit MASTER
<b>Nr ref. 1052/32P</b>	Power supply unit MASTER / SLAVE
<b>Nr ref. 1042/12</b>	Digital call module with numeric keypad
<b>Nr ref. 1042/15</b>	4 digit LED display module
<b>Nr ref. 1042/20</b>	Additional power supply

**MIWI - URMET Sp. z o.o.**

Pojezierska 90a

91-341 Lodz

tel. 48 (42) 616 21 00, fax 48 (42) 616 21 13

www.miwurmet.com.pl, e-mail: miwi@miwurmet.com.pl